

Shaftesbury 35

REX HOMES

affordable living solutions

Lot Width	12.56m
Squares	35.60



Inclusions

- Master bedroom with walk in robe and ensuite
- Open plan kitchen / family / meals
- Modern kitchen with italian stainless steel appliances
- Modern facade
- Remote control double garage & internal access
- Flick mixers to bathrooms
- Carpets to bedrooms, tiles to wet areas
- Wide entry door



Rex Homes: Suite 2, Unit 4, 82 Makland Drive Derrimut Victoria 3030
P: 1300 710 935 info@rexhomes.com.au www.rexhomes.com.au

Copyright: All rights reserved by Rex Homes. Disclaimer: The information contained in this brochure is of a general nature only. Prospective purchasers should refer to architectural drawings and specifications for detailed information. Images are provided for illustration purposes only.

Shaftesbury 35

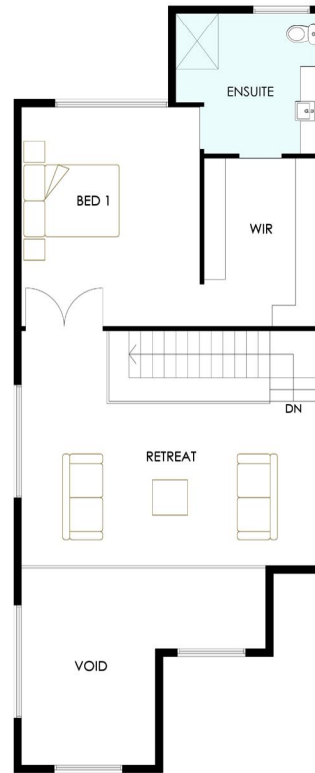
REX HOMES

affordable living solutions

Lot Width 12.56m
Squares 35.60



GROUND FLOOR



FIRST FLOOR

- 2
- 2
- 4
- 6

House Size

Ground Floor Area	203.13m ²	(21.87sq)
First Floor Area	91.19m ²	(9.82sq)
Garage	36.36m ²	(3.91sq)
Total	330.68m²	(35.60sq)
House Length	25.68m	
House Width	11.36m	

Room Dimensions

Lounge	3.9m x 4.6m
Kitchen	2.9m x 4.6m
Living / Meals	5.2m x 9.8m
Study	3.0m x 3.0m
Bed 1	3.8m x 4.6m
Bed 2	3.0m x 3.0m
Bed 3	3.0m x 3.0m
Bed 4	3.0m x 3.0m
Retreat	6.2m x 3.5m
Double Garage	5.5m x 6.0m