

# Cleopatra 27

# REX HOMES

affordable living solutions

Lot Width 13.50m  
Squares 27.18



## Inclusions

- Master bedroom with walk in robe and ensuite
- Open plan kitchen / family / meals
- Modern kitchen with italian stainless steel appliances
- Modern facade
- Remote control double garage & internal access
- Flick mixers to bathrooms
- Carpets to bedrooms, tiles to wet areas
- Wide entry door
- Three separate living areas

Rex Homes: Suite 2, Unit 4, 82 Makland Drive Derrimut Victoria 3030  
P: 1300 710 935 [info@rexhomes.com.au](mailto:info@rexhomes.com.au) [www.rexhomes.com.au](http://www.rexhomes.com.au)

Copyright: All rights reserved by Rex Homes. Disclaimer: The information contained in this brochure is of a general nature only. Prospective purchasers should refer to architectural drawings and specifications for detailed information. Images are provided for illustration purposes only.

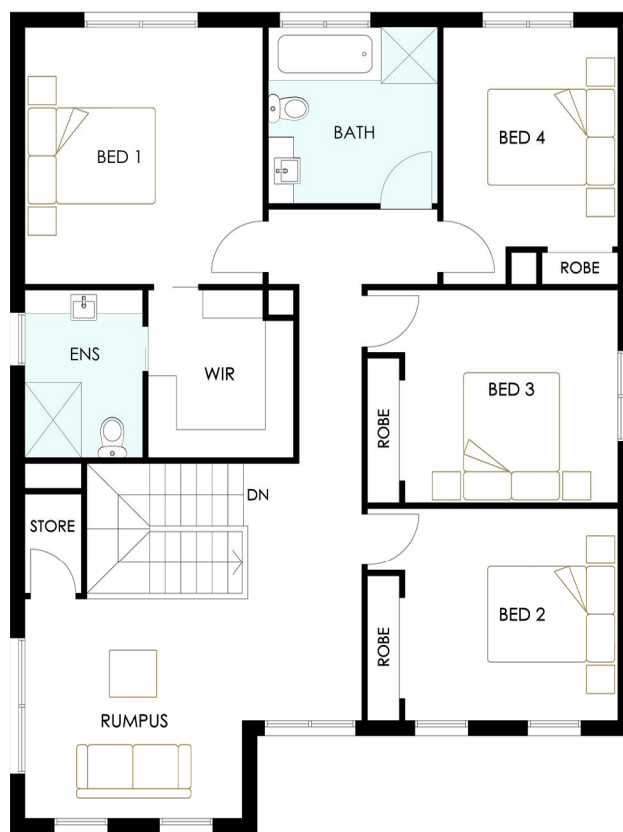


# Cleopatra 27

# REX HOMES

affordable living solutions

Lot Width 13.50m  
Squares 27.18



GROUND FLOOR

FIRST FLOOR

## House Size

|                   |                            |                  |
|-------------------|----------------------------|------------------|
| Ground Floor Area | 99.98m <sup>2</sup>        | (10.76sq)        |
| First Floor Area  | 115.54m <sup>2</sup>       | (12.44sq)        |
| Garage            | 37.00m <sup>2</sup>        | (3.98sq)         |
| <b>Total</b>      | <b>252.52m<sup>2</sup></b> | <b>(27.18sq)</b> |
| House Length      | 13.60m                     |                  |
| House Width       | 11.63m                     |                  |

## Room Dimensions

|                |             |
|----------------|-------------|
| Lounge         | 3.4m x 3.5m |
| Living / Meals | 6.7m x 5.0m |
| Kitchen        | 2.7m x 3.3m |
| Rumpus         | 3.4m x 3.5m |
| Bed 1          | 3.8m x 4.1m |
| Bed 2          | 3.4m x 3.4m |
| Bed 3          | 3.4m x 3.4m |
| Bed 4          | 2.8m x 3.5m |
| Double Garage  | 5.5m x 6.0m |