

Alisha 22

REX HOMES

affordable living solutions

Lot Width 10.20m
Squares 22.22



Inclusions

Master bedroom with walk in robe and ensuite
Open plan kitchen / family / meals
Modern kitchen with italian stainless steel appliances
Modern facade
Remote control double garage & internal access
Flick mixers to bathrooms
Carpets to bedrooms, tiles to wet areas
Wide entry door
Two separate living areas



Rex Homes: Suite 2, Unit 4, 82 Makland Drive Derrimut Victoria 3030
P: 1300 710 935 info@rexhomes.com.au www.rexhomes.com.au

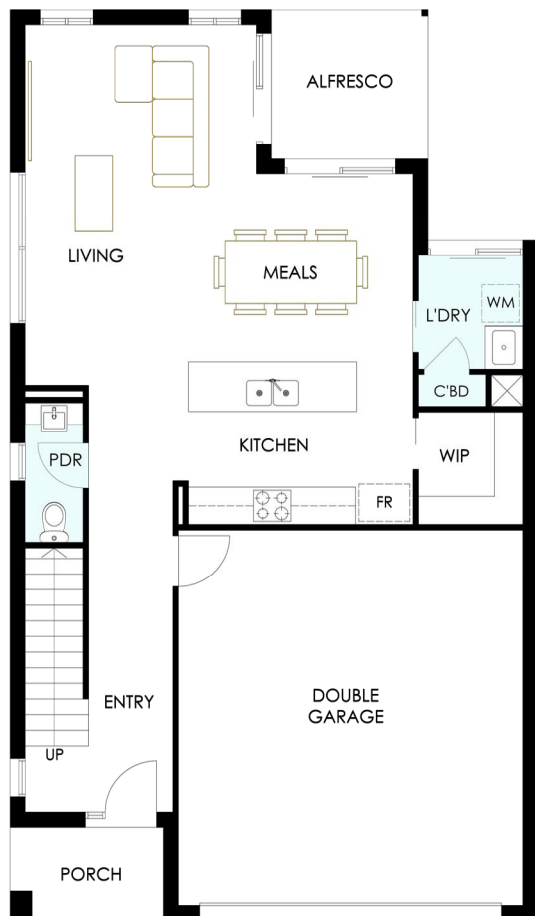
Copyright: All rights reserved by Rex Homes. Disclaimer: The information contained in this brochure is of a general nature only. Prospective purchasers should refer to architectural drawings and specifications for detailed information. Images are provided for illustration purposes only.

Alisha 22

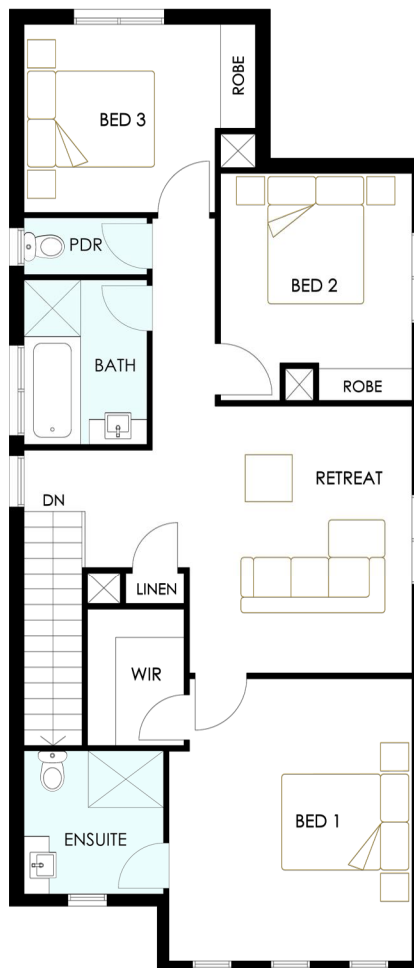
REX HOMES

affordable living solutions

Lot Width 10.20m
Squares 22.22



GROUND FLOOR



FIRST FLOOR

House Size

Ground Floor Area	80.34m ²	(8.65sq)
First Floor Area	90.31m ²	(9.72sq)
Garage	35.81m ²	(3.85sq)
Total	206.46m²	(22.22sq)
House Length	15.42m	
House Width	8.42m	

Room Dimensions

Kitchen	3.6m x 2.6m
Living / Meals / Alfresco	6.2m x 5.4m
Bed 1	3.8m x 4.5m
Bed 2	3.0m x 3.0m
Bed 3	3.0m x 3.0m
Retreat	3.5m x 4.2m
Double Garage	5.5m x 6.0m